

## Access control:

### Data concentration for access control devices used in personnel entrances

A traditional access control system for employees is based on a registering clock, installed in a common place, where crewmembers log their entrance and exit. Data communication between the associated computer and the clock is usually achieved through a serial connection, for example RS-232. This fact restricts the maximum cabling length up to 20 meters.

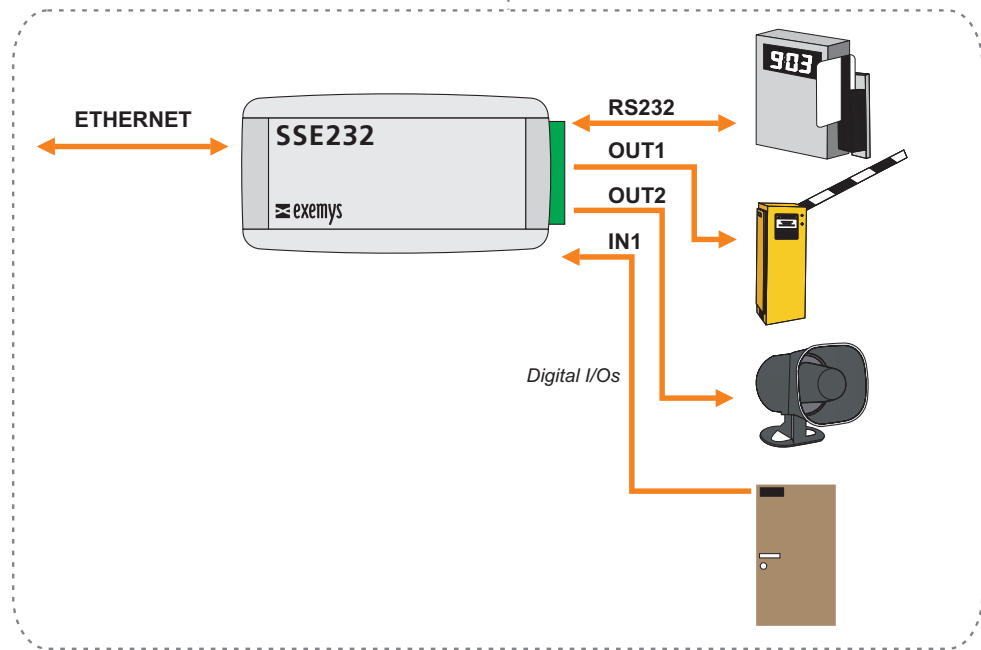
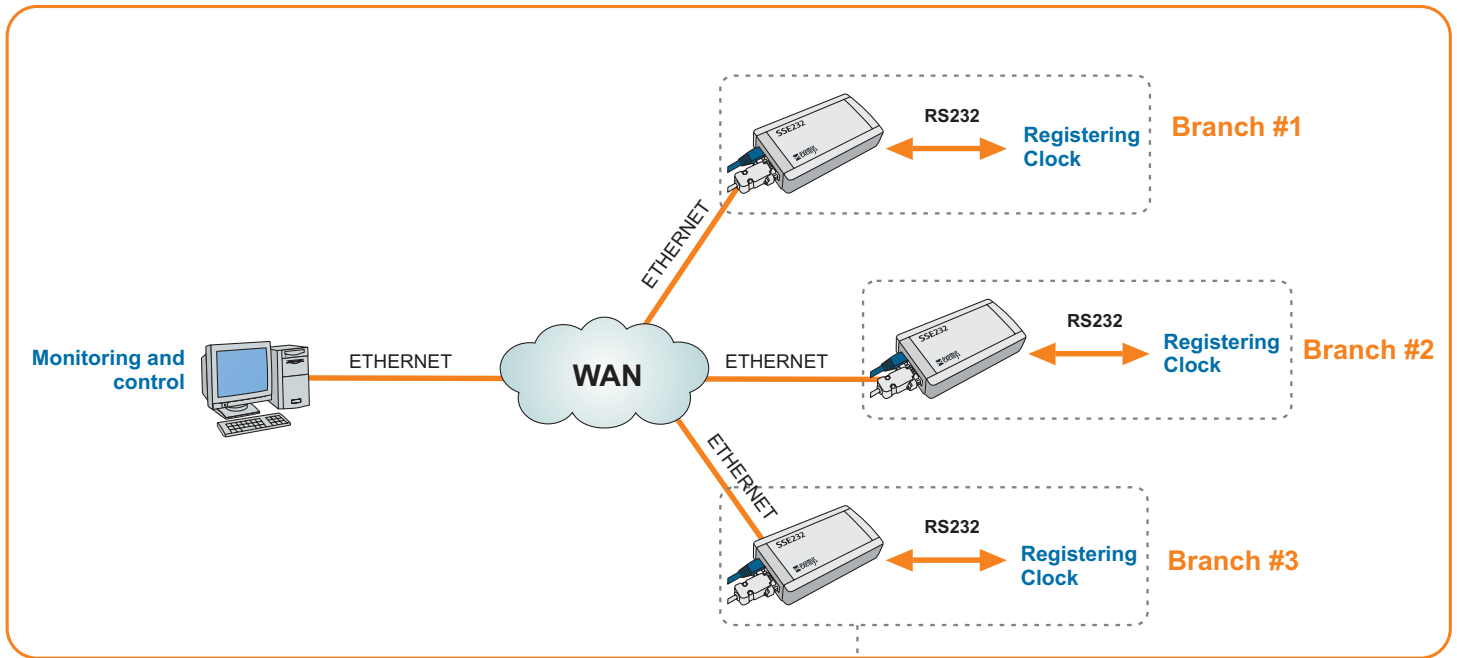
**When you choose a device among our outstanding Exemys' SSE232 catalogue of Serial-to-Ethernet converters, you can easily expand your system capabilities. You may monitor and control one or more access control systems with a single computer, installed anywhere in your building or outdoors (e.g. Human Resources Department) since it can be accessed through a WAN, via TCP/IP protocol.**

SSE232 converters also provide embedded digital input and outputs, which allow to enable and disable several devices (gates, alarms, beacons) or monitor different sensors (door opening, alarm button, intrusion detector).

### Benefits

- Increase the efficiency of the Human Resource department, because it concentrates the whole access control data, spread around many sites in your company.
- Reduce costs, since different models and technologies of control access clocks may be administered by TCP/IP.

→ Remote access allows adding digital inputs and outputs capability to your existent control access clock.



For technical support please contact:  
[support@exemys.com](mailto:support@exemys.com)

For sales please contact:  
[sales@exemys.com](mailto:sales@exemys.com)

[www.exemys.com](http://www.exemys.com)



Exemys products are in constant evolution to satisfy our customers needs. For that reason, the specifications and capabilities are subject to change without prior notice. Updated information can be found at [www.exemys.com](http://www.exemys.com)  
Copyright © Exemys, 2003. All Rights Reserved. **R3.00**  
The Exemys logo is a registered trademark of Exemys LLC. All other trademarks mentioned in this document are the property of their respective owners.